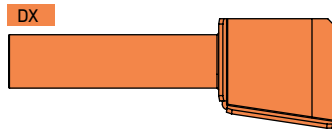
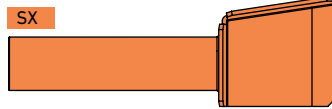
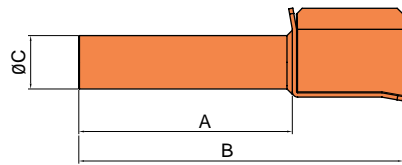


3 PALAS

- Pala
- Sensor presencia chapa





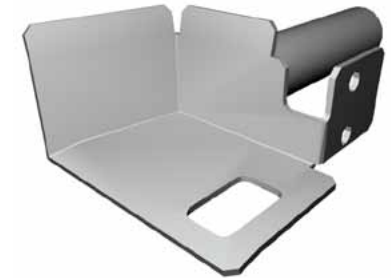
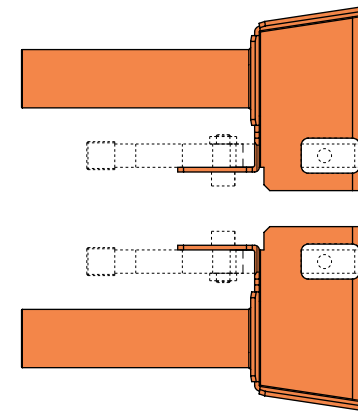
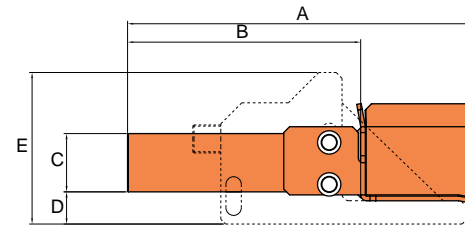
| | Peso (kg) |
|---------------|-----------|
| PAL-25-100-DX | 0,234 |
| PAL-25-100-SX | 0,234 |
| PAL-30-100-DX | 0,250 |
| PAL-30-100-SX | 0,250 |

■ Material: F-114

Ejemplo de aplicación



| TIPO | A | B | ØC |
|---------------|-----|-----|----|
| PAL-25-100-DX | 100 | 152 | 25 |
| PAL-25-100-SX | 100 | 152 | 25 |
| PAL-30-100-DX | 100 | 152 | 30 |
| PAL-30-100-SX | 100 | 152 | 30 |

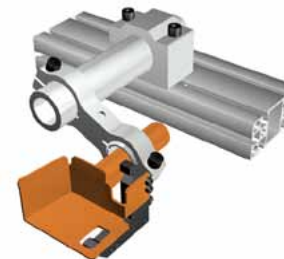


| | Peso (kg) |
|-------------------|-----------|
| PAL-25-100-OPL-DX | 0,376 |
| PAL-25-100-OPL-SX | 0,376 |
| PAL-30-100-OPL-DX | 0,255 |
| PAL-30-100-OPL-SX | 0,255 |

► Sensor no incluido

■ Material: F-114

Ejemplos de aplicaciones

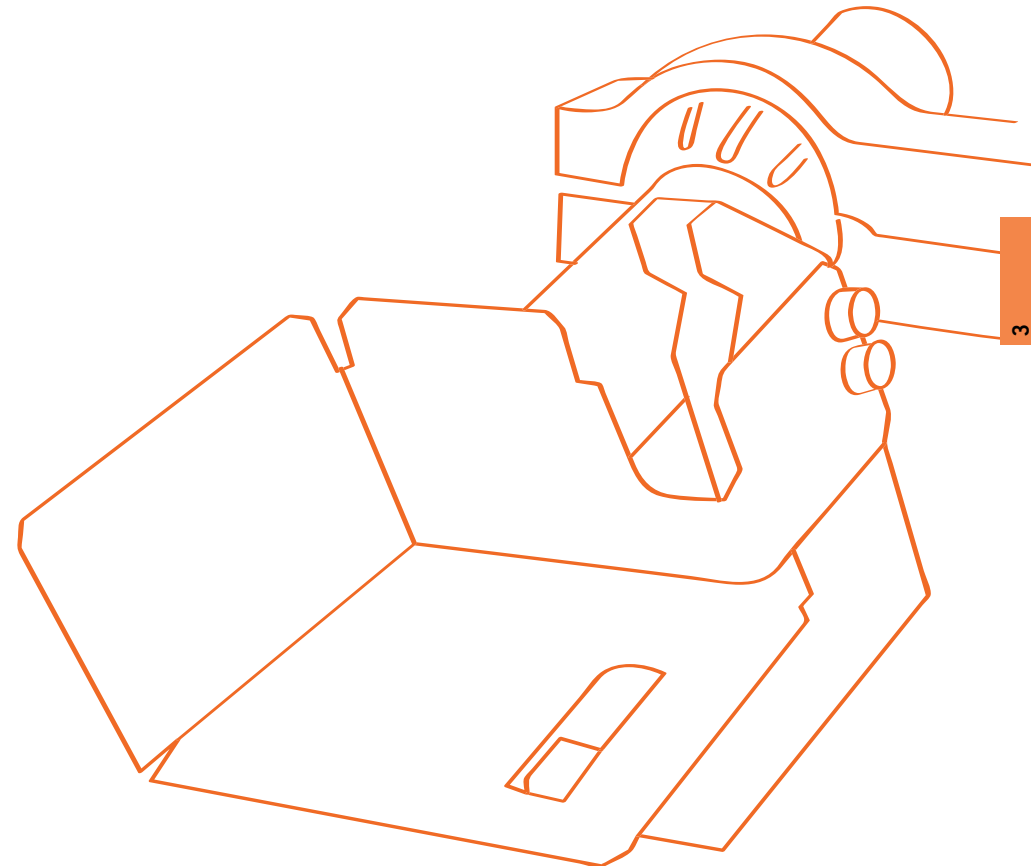
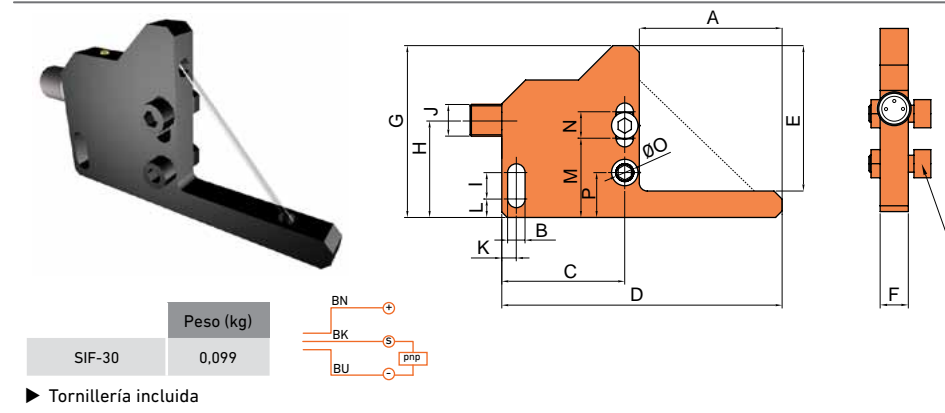
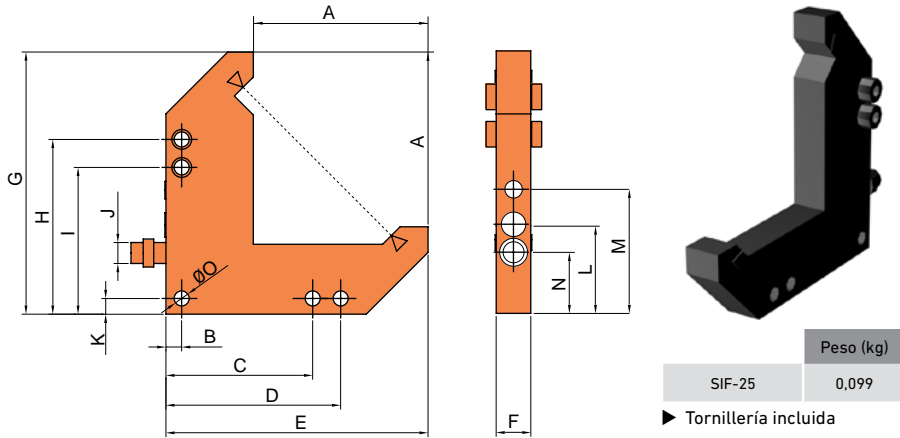


| TIPO | A | B | ØC | D | E |
|-------------------|-----|-----|----|------|----|
| PAL-25-100-OPL-DX | 152 | 100 | 25 | 13,5 | 65 |
| PAL-25-100-OPL-SX | 152 | 100 | 25 | 13,5 | 65 |
| PAL-30-100-OPL-DX | 152 | 100 | 30 | 13,5 | 65 |
| PAL-30-100-OPL-SX | 152 | 100 | 30 | 13,5 | 65 |

PALAS - Sensor presencia chapa

Estampación

SIF-...



Ejemplos de aplicaciones



| TIPO | A | B | C | D | E | F | G | H | I | J | K | L | M | N | ØO | P |
|--------|----|-----|------|-----|----|----|----|------|----|-------|-----|------|----|------|-----|----|
| SIF-25 | 50 | 4,5 | 42 | 50 | 75 | 10 | 73 | 50 | 42 | M8X1 | 4,5 | 17,5 | 25 | 35,5 | 4,3 | |
| SIF-30 | 54 | 6,6 | 46,5 | 106 | 55 | 10 | 65 | 36,5 | 10 | M12X1 | 5,5 | 10 | 30 | 20 | 6,6 | 17 |

Misati se reserva el derecho a modificar cualquier característica. Verifique el último nivel de información en www.misati.com



C/ Puig i Vallés 15, Barcelona (SPAIN) E-08028
 Tel. (+34) 93 440 47 27 - Fax. (+34) 93 448 05 75
misati@misati.com - www.misati.com