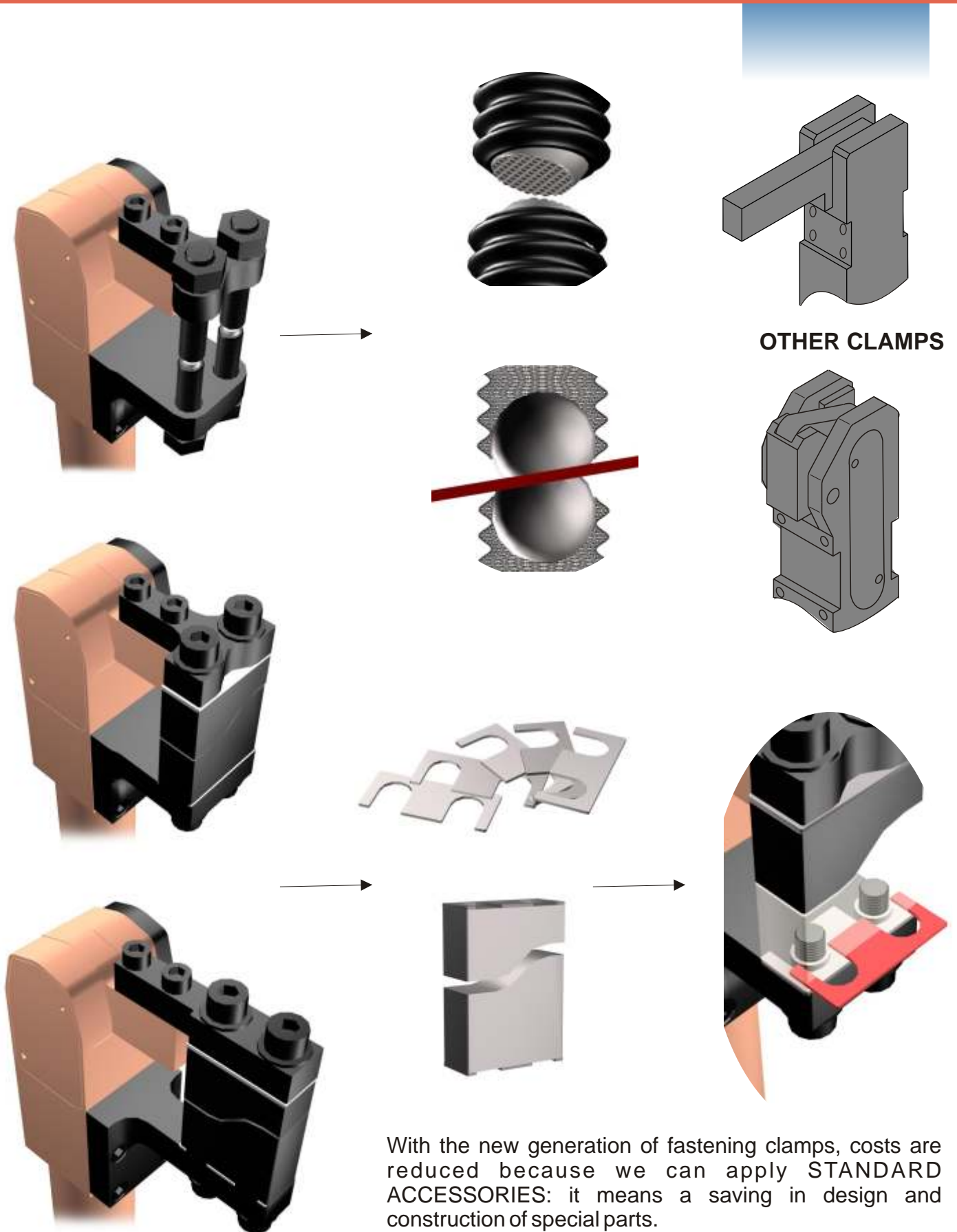
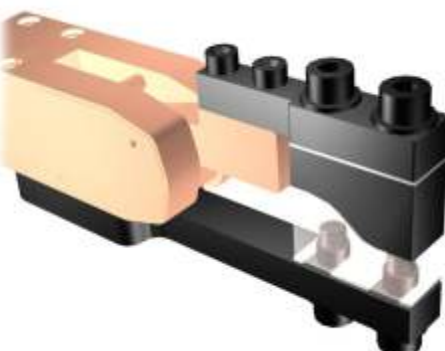


TREAD FINGERS



ASSEMBLIES



BL-20
BL-32
BL-40

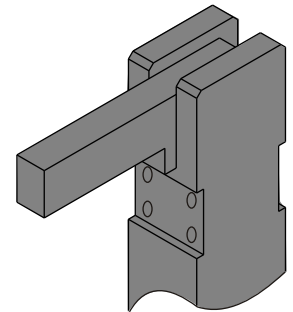
BI-20
BI-32
BI-40

BC-20
BC-32

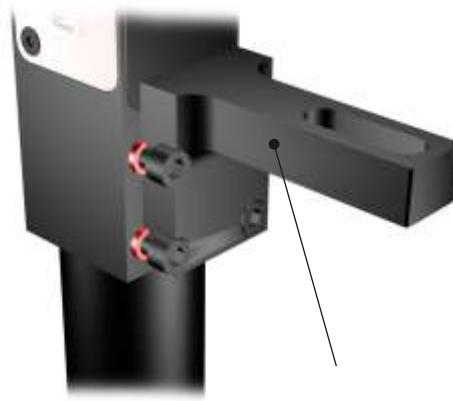
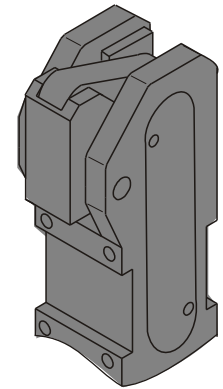
FASTENING OF THE TREAD FINGER TO THE ARM



SPECIAL



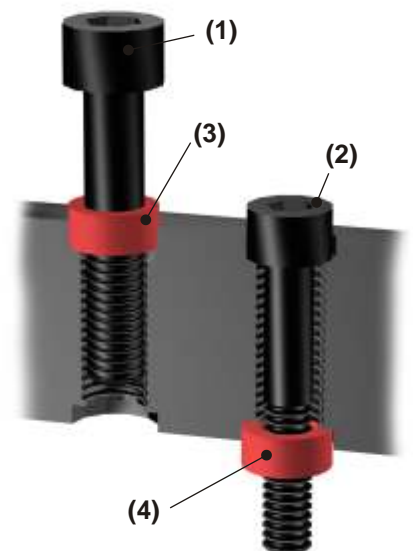
OTHER CLAMPS



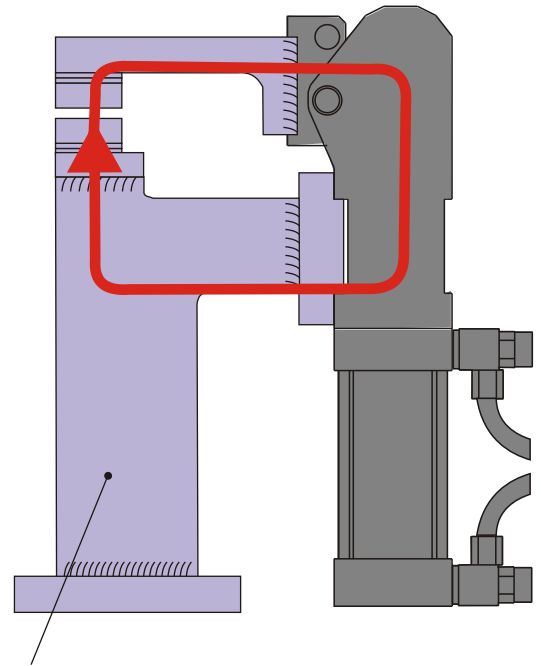
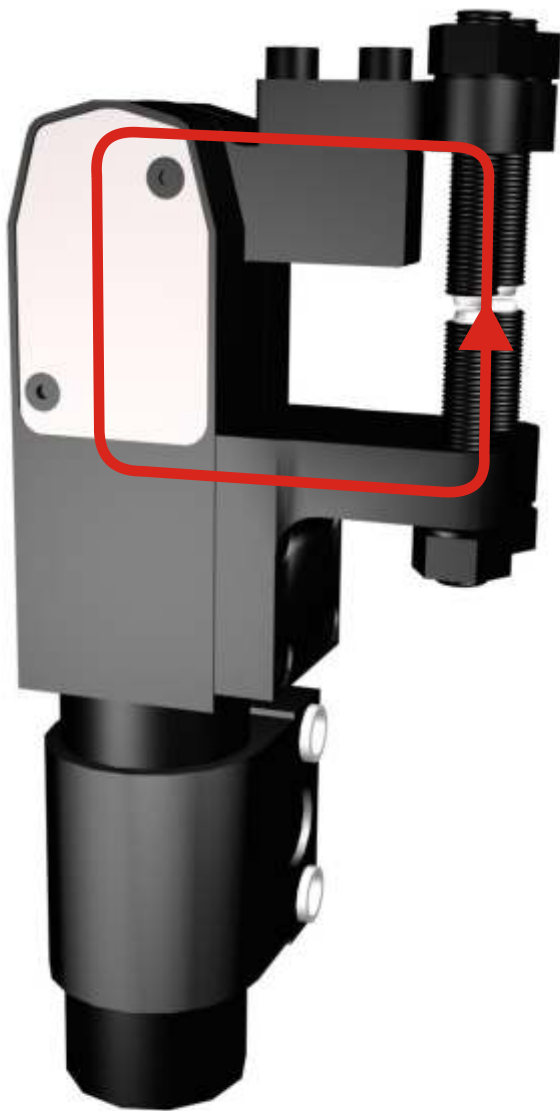
SPECIAL



Fastening of accessories to the arm and body of the clamp is made with threaded screws (1), passing screws (2) and upper (3) or lower (4) centring guide bushings. In this way, it's easier to assemble, centre and interchange tread fingers



STRESS CIRCUIT



SPECIAL
PIECES

OTHER CLAMPS

RECOMMENDED ASSEMBLY



In order to avoid distortion or breaking of the pieces that withstand the stress of the clamp, the shape of the stress circuit should be planned with enough rigidity, adequate fastening and accurate centring.