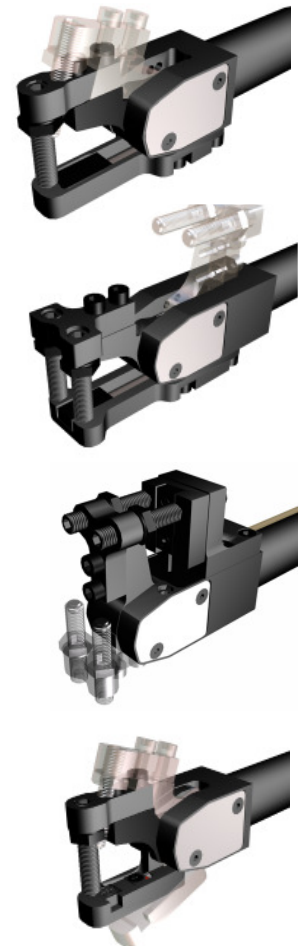


WHICH MINIPINCER SHOULD I USE?

PINCERS FOR TRANSFERS

MODEL	* OPENING	POSITION OF SHEET	MOVABLE ARM	WIDTH	PAGE
TIP	20	HORIZONTAL	1	15...70	2-05
TI	90	HORIZONTAL	1	15...70	2-07
TL	90	VERTICAL	1	15...70	2-09
TCP	14+14	HORIZONTAL TRANSVERSE	2	15...70	2-11



* Standard opening. For special openings (EE-...), see p. 9-03.

Ordering Information

TIP - 20 - 15

MODEL OF THE PINCER	PISTON DIAMETER	WIDTH OF THE GRIPPER FINGER
TIP	20	15
TI	32	20
TL		30
TCP		40
TIG		60
TLG		70
TCG		